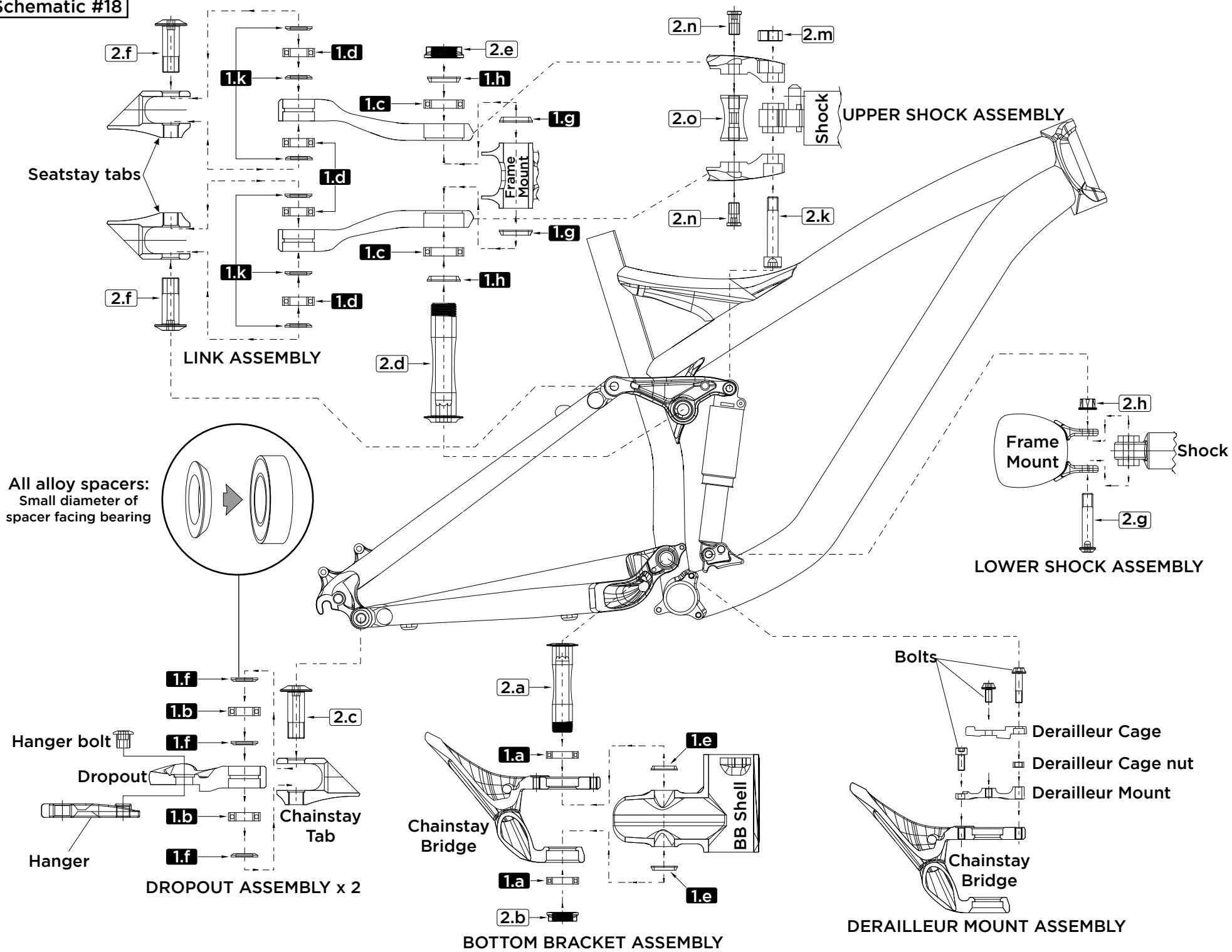


Schematic #18





2007-2009 Enduro SL

Bearing Kit 9897-5060

Part #	Qty.	Part Description	Part Specification
1.a	2	BB Pivot Bearing	6802 RS (1524F) Series Full Complement Bearing - 24mm O.D. x 15mm I.D. x 5mm Width
1.b	4	Dropout Pivot Bearing	6800-2RS Series Bearing - 19mm O.D. x 10mm I.D. x 5mm Width
1.c	2	Shock Link @ Frame Pivot Bearing	6802 RS (1524F) Series Full Complement Bearing - 24mm O.D. x 15mm I.D. x 5mm Width
1.d	4	Shock Link @ Seatstay Pivot Bearing	6800-2RS Series Bearing - 19mm O.D. x 10mm I.D. x 5mm Width
1.e	2	BB Pivot Spacer	Alloy spacer - 20mm O.D. x 15mm I.D. x 3mm Width, Chamfered
1.f	6	Dropout Pivot Bearing Spacer	Alloy spacer - 13mm O.D. x 10mm I.D. x 2mm Width, Chamfered
1.g	2	Shock Link @ Frame Pivot Spacer	Alloy spacer - 20mm O.D. x 15mm I.D. x 3mm Width, Chamfered
1.h	2	Shock Link Pivot Outer Spacer	Alloy spacer - 20mm O.D. x 15mm I.D. x 3mm Width, Chamfered
1.k	6	Shock Link @ Seatstay Pivot Spacer	Alloy spacer - 13mm O.D. x 10mm I.D. x 2mm Width, Chamfered

Bolt Kit 9897-5160

B = Blue Loctite required

Part #	Qty.	Part Description	Part Specification	Torque in*lb
2.a	1	BB Pivot Axle	Alloy Axle - 15mm O.D. (23.5mm Head O.D.), M15 Thread x 64.5mm Shaft Length, 8mm Allen Hex Head	200-230 B
2.b	1	BB Pivot Nut	Alloy Nut - 23.5mm O.D x M15 Thread, 19mm socket (<i>use 6-point 19mm socket only</i>)	200-230
2.c	2	Dropout Pivot Bolt	Alloy Bolt - M10 Thread x 28mm Shaft Length, 4mm Allen Hex Head	70-90 B
2.d	1	Shock Link @ Frame Pivot Axle	Alloy Axle - 15mm O.D. (23.5mm Head O.D.), M15 Thread x 67.5mm Shaft Length, 8mm Allen Hex Head	200-230 B
2.e	1	Shock Link @ Frame Pivot Nut	Alloy Nut - 23.5mm O.D x M15 Thread, 19mm socket (<i>use 6-point 19mm socket only</i>)	200-230
2.f	2	Shock Link @ Seatstay Pivot Bolt	Alloy Bolt - M10 Thread x 28mm Shaft Length, 4mm Allen Hex Head	70-90 B
2.g	1	Lower Shock Eye bolt (Alloy Frame)	Alloy Bolt - M8 Thread x 47.5mm Shaft Length, 4mm Allen Hex Head	100-120 B
2.g	1	Lower Shock Eye bolt (Carbon Frame)	Alloy Bolt - M8 Thread x 40.5mm Shaft Length, 4mm Allen Hex Head	100-120 B
2.h	1	Lower Shock Eye Nut	Alloy Nut - 13.5mm O.D x M8 Thread, 11mm socket	100-120
2.k	1	Upper Shock Eye Bolt	Alloy Bolt - M8 Thread x 45mm Shaft Length, 6mm Allen Hex Head	120-140 B
2.m	1	Upper Shock Eye Nut	Alloy Nut - Teardropped O.D., M8 Thread	120-140
2.n	2	Link Stabilizer Brace Bolt	Alloy Bolt - M8 Thread x 8.5mm Shaft Length, 4mm Allen Hex Head	45-65 B
2.o	1	Link Stabilizer Brace	Alloy Stabilizer Brace - 20mm O.D (Concave) x 34mm width, M8 Thread	