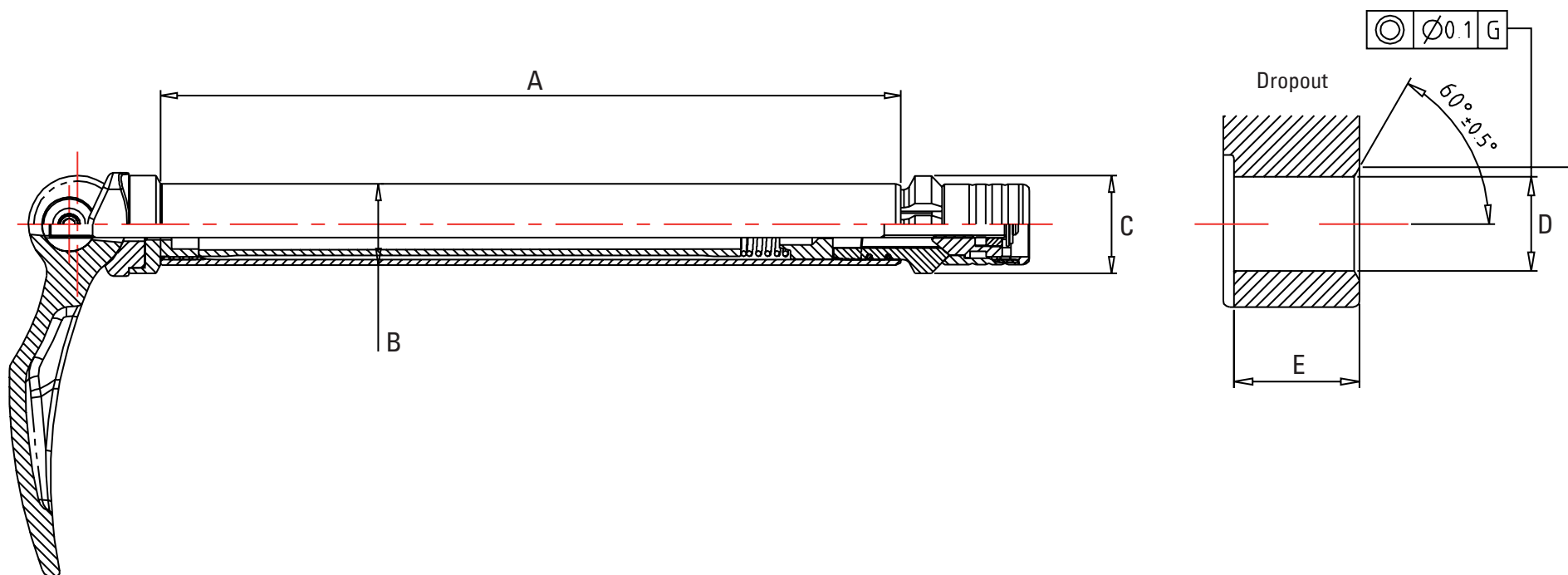


## Q-LOC dimensions overview



Part code	Part name	A (mm)	B (mm)	C (mm)	D (mm)	E (mm)	Description	weight	Fork model
FKA069-05	15QLC2	140	14,95	18	15+0.033/-0	20+/-0.2	Cr-Mo axle, steel QR	112g	EPIXON elite
FKA069-15	15QLC2Ti	140	14,95	18	15+0.033/-0	20+/-0.2	7050 axle, Ti QR, CNCed lever	70g	AXON, AURON
FKA069-25	15QLC32	140	14,95	18	15+0.033/-0	20+/-0.2	steel axle, steel QR	118g	AION, EPIXON, RAIDON, XCR
FKA097-25	15QLC32-R	120	14,95	18	15+0.033/-0	10+/-0.2	steel axle, steel QR	108g	NCX
FKA100-25	15QLC32-110	150	14,95	18	15+0.033/-0	20+/-0.2	steel axle, steel QR	122g	RAIDON 650B plus
FKA068-05	20QLC2	150	19,92	23	20+0.033/-0	20+/-0.2	6061 axle, steel QR	140g	DUROLUX
FKA103-00	12QLC2	118	11,95	14,6	12+0.033/-0	9+/-0.2	Cr-Mo axle, steel QR	96g	Front
FKA103-10	12QLC2	162	11,95	14,6	12+0.033/-0	10+/-0.2	Cr-Mo axle, steel QR	120g	Rear